



**ICID2015**

26<sup>th</sup>ERC & 66<sup>th</sup>IEC

# IRRIGATION PUMPING EFFICIENCY AT SMALLHOLDINGS IN NORTH EAST BRAZIL



**Luciano Mateos**

[luciano.mateos@ias.csic.es](mailto:luciano.mateos@ias.csic.es)

**Alexsandro C.S. Almeida**

**José A. Frizzone**

**Silvio C.R.V. Lima**





BAIXO AÇARAU M5

BAIXO AÇARAU M2

BAIXO AÇARAU M3

BAIXO AÇARAU M4

BAIXO AÇARAU M1

GOVERNO DO ESTADO DO CEARÁ

PONTE PORTICO

ROLA 25

CAMARA 2 1ª ETAPA

CAMARA 3 1ª ETAPA

CAMARA 4 1ª ETAPA

CAMARA 5 1ª ETAPA





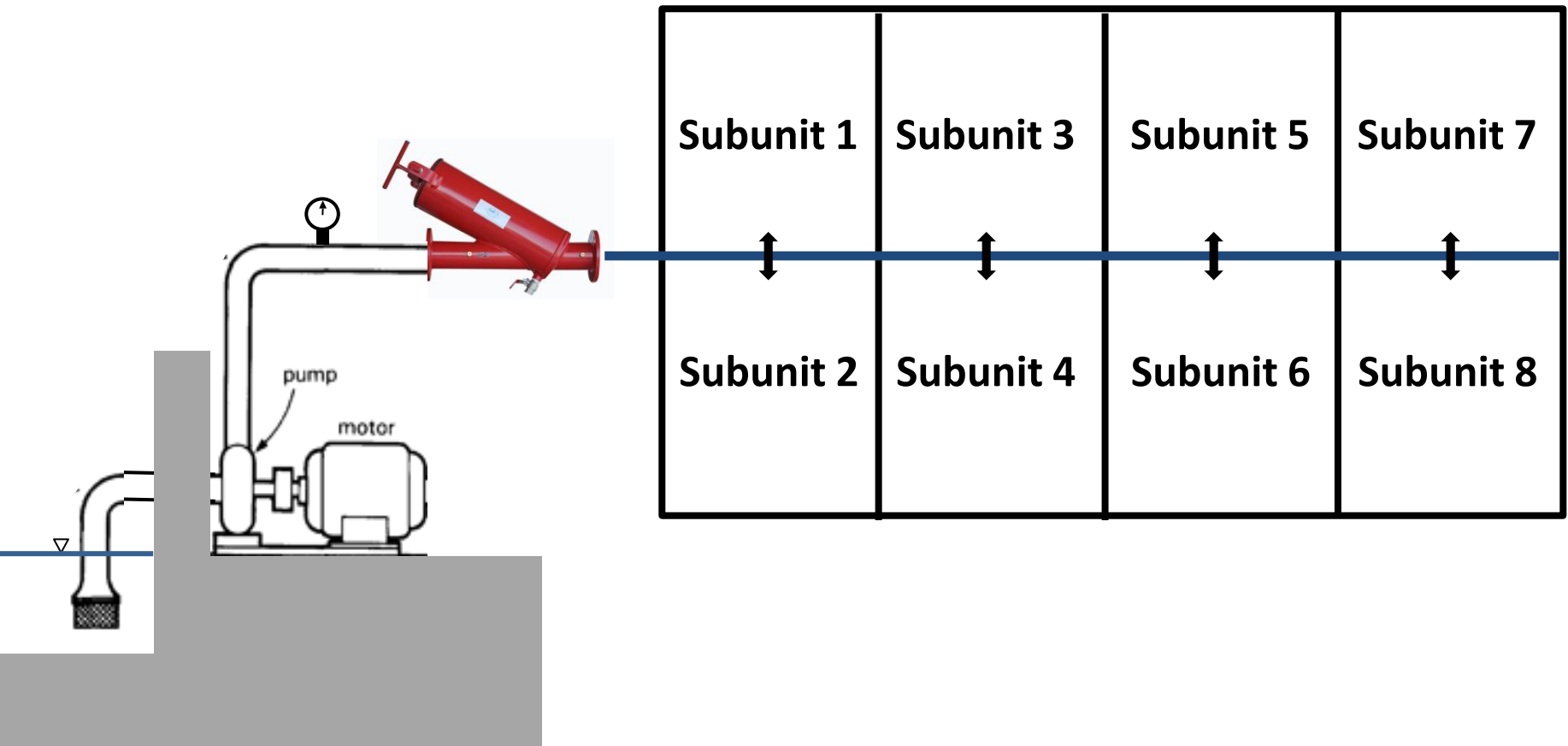


- 8,335 ha irrigable area
- 501 farm lots
  - 355 small (8 ha)
  - medium (16-18 ha)
  - large (80-200 ha)
- Managed by a WUA





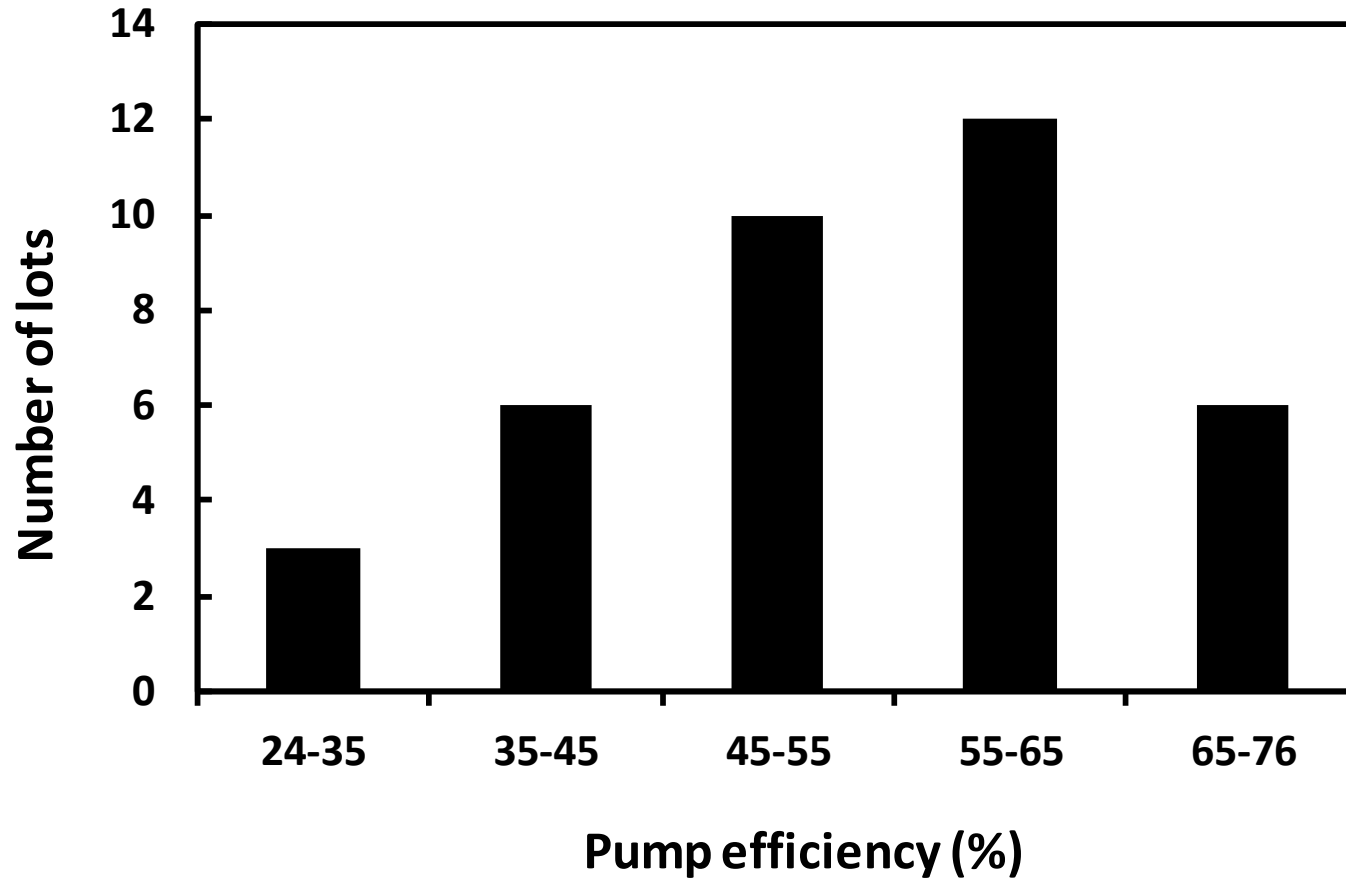






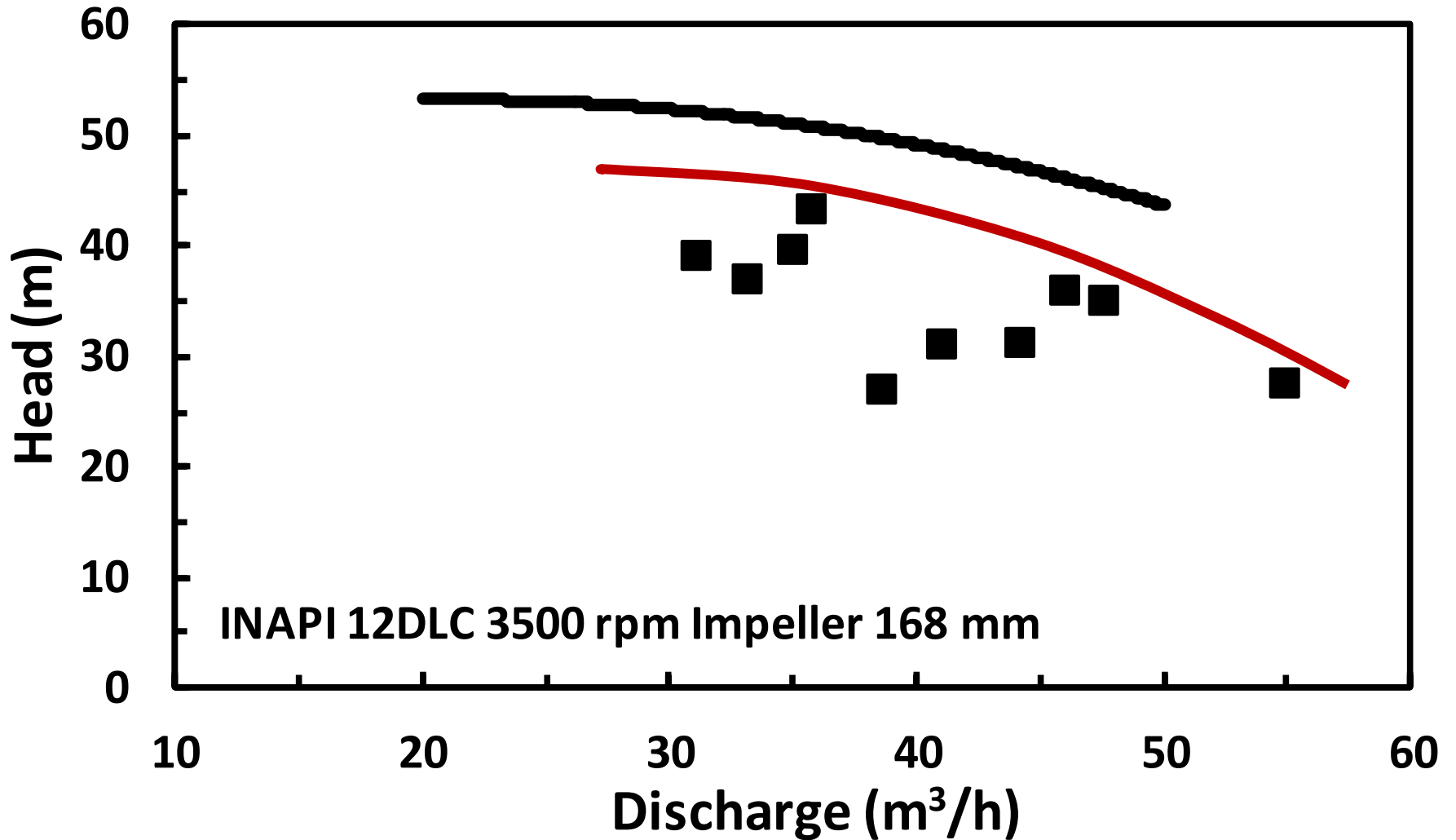


# Pump performance

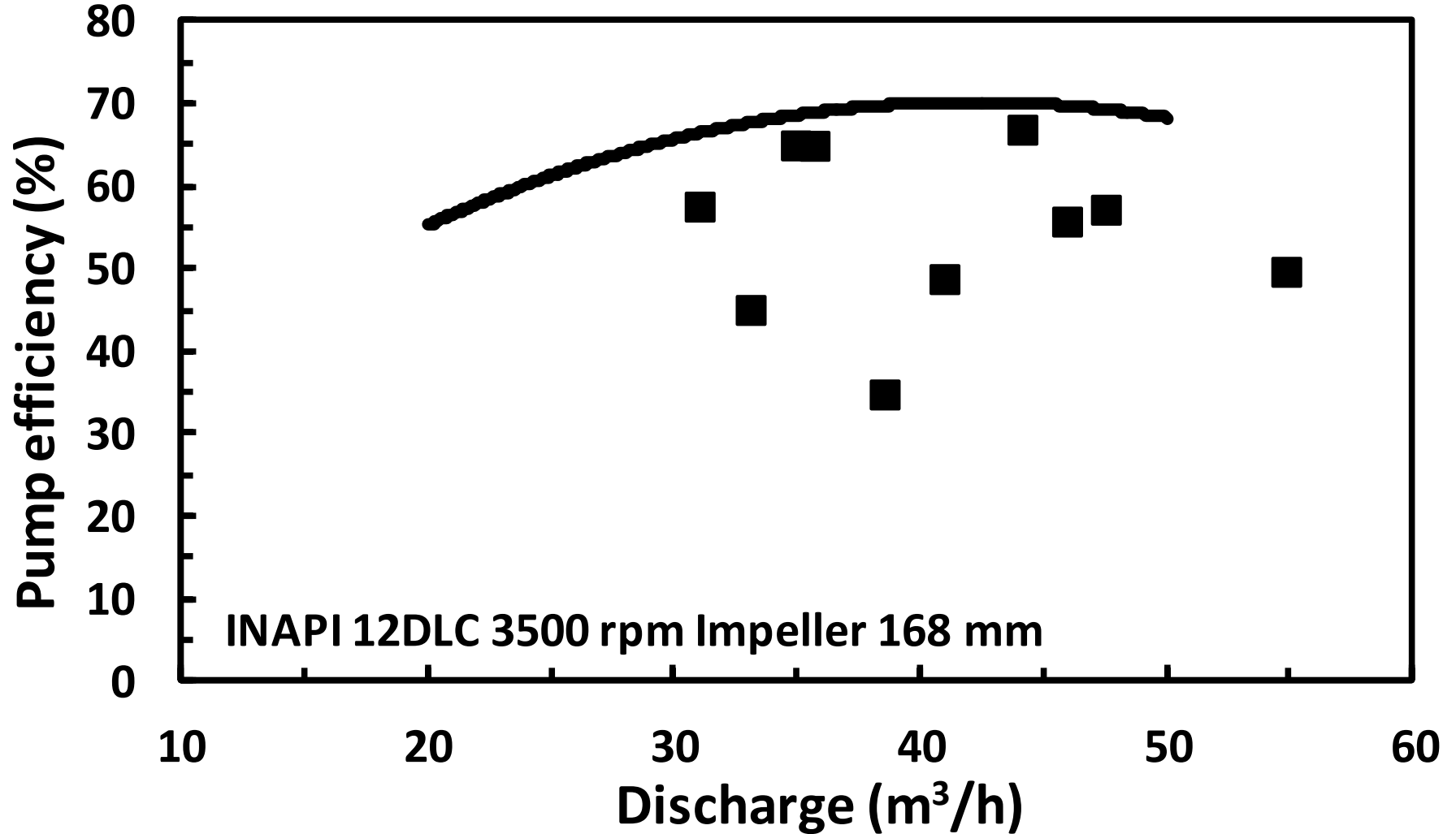




# Pump performance



# Pump performance



# Filter performance





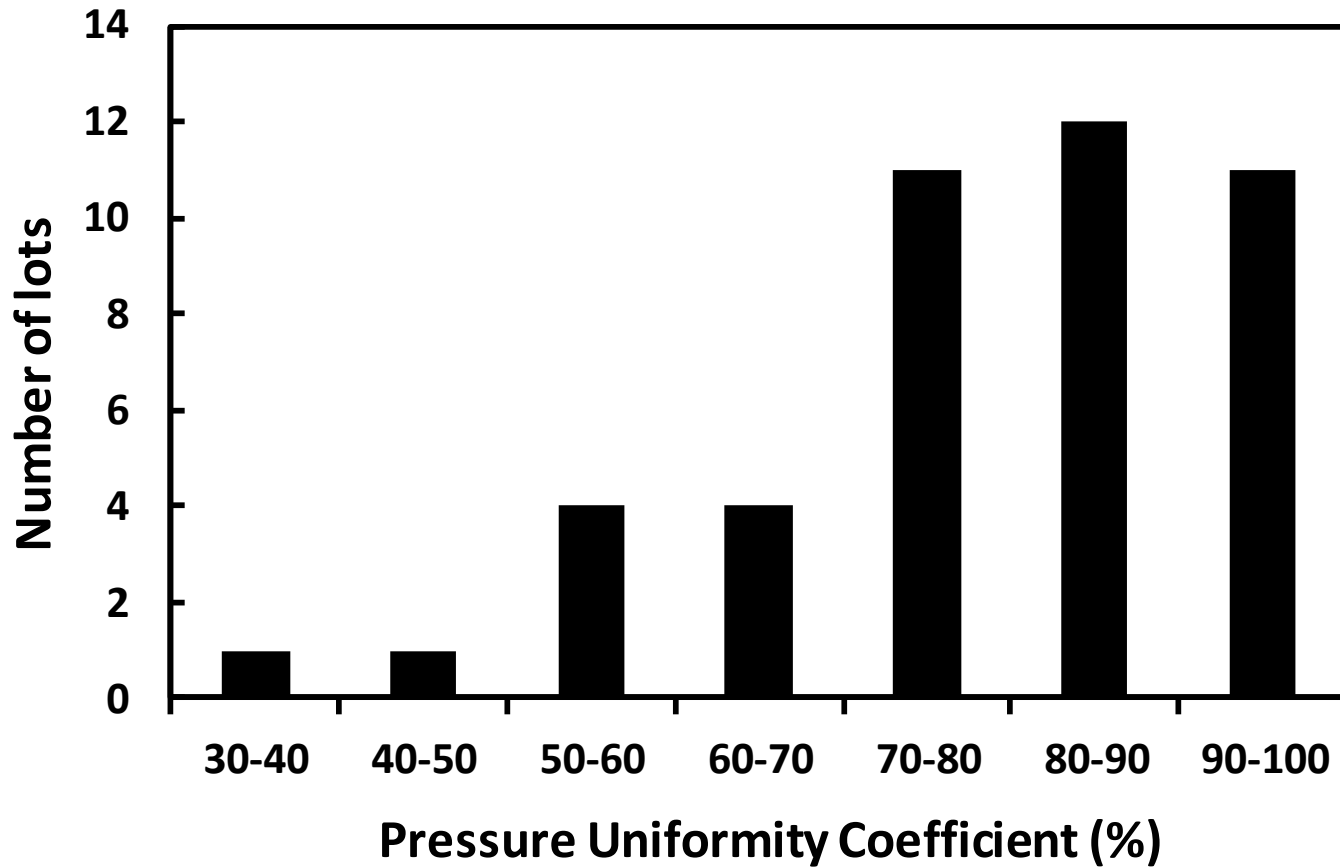




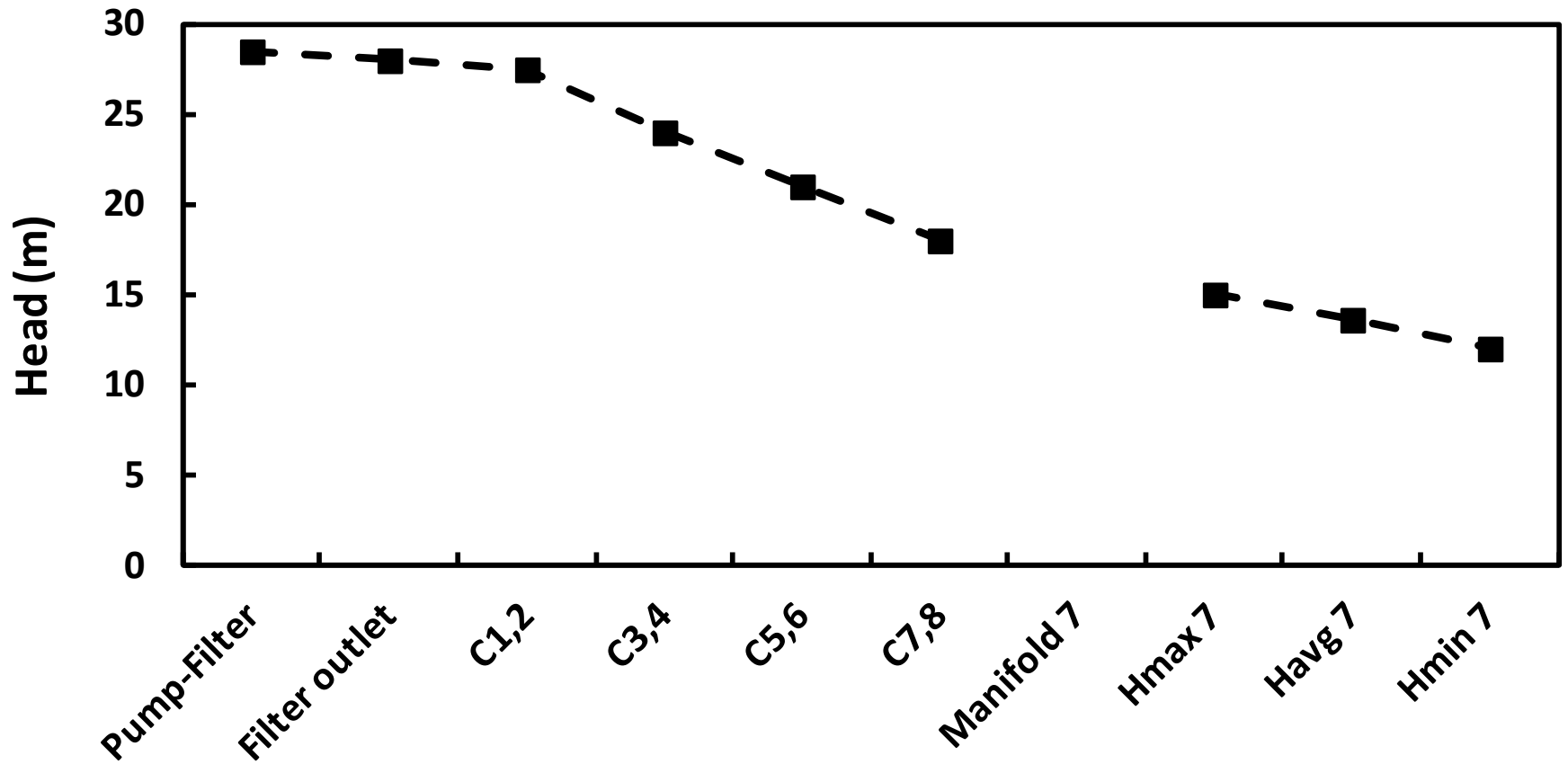
Asesorias Nordeste  
(84) 4005-0100

Escola Estadual de Educação Profissional  
Julio França

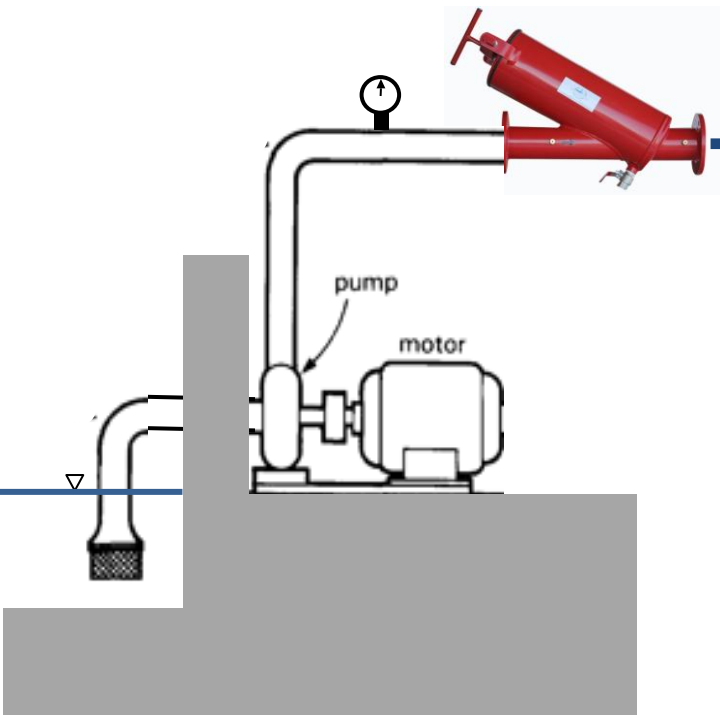
# Subunit performance



# Main line - subunit performance

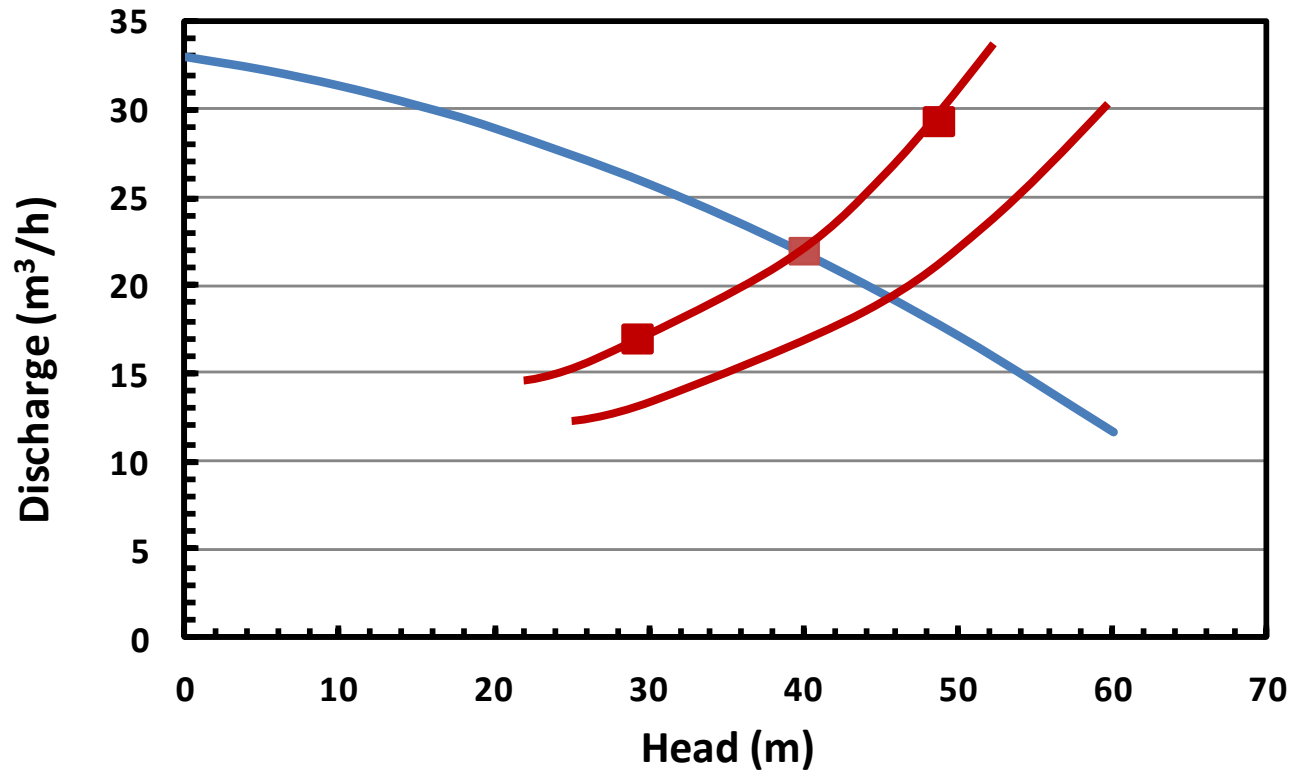


# Global performance analysis

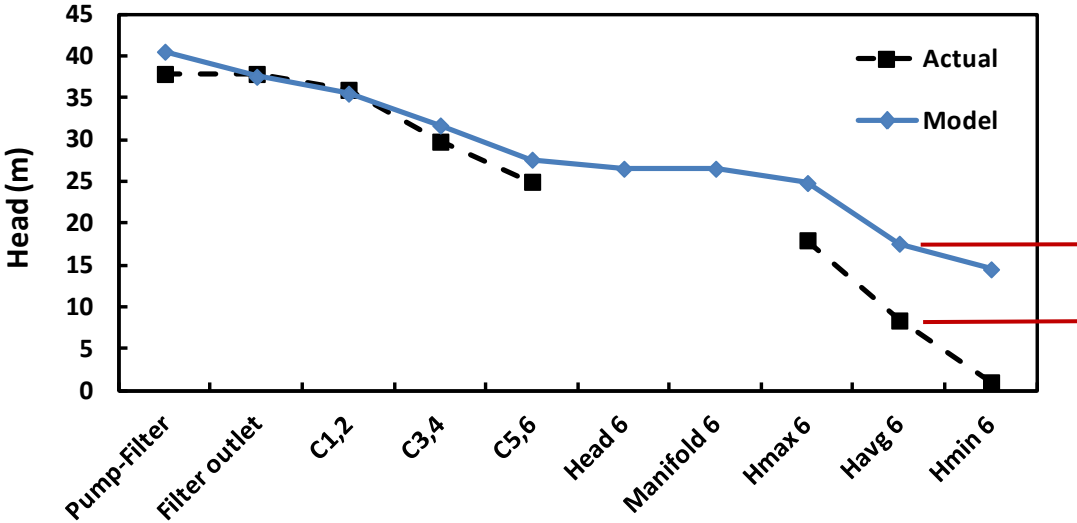


Subunit 1	Subunit 3	Subunit 5	Subunit 7
Subunit 2	Subunit 4	Subunit 6	Subunit 8

# Global performance analysis

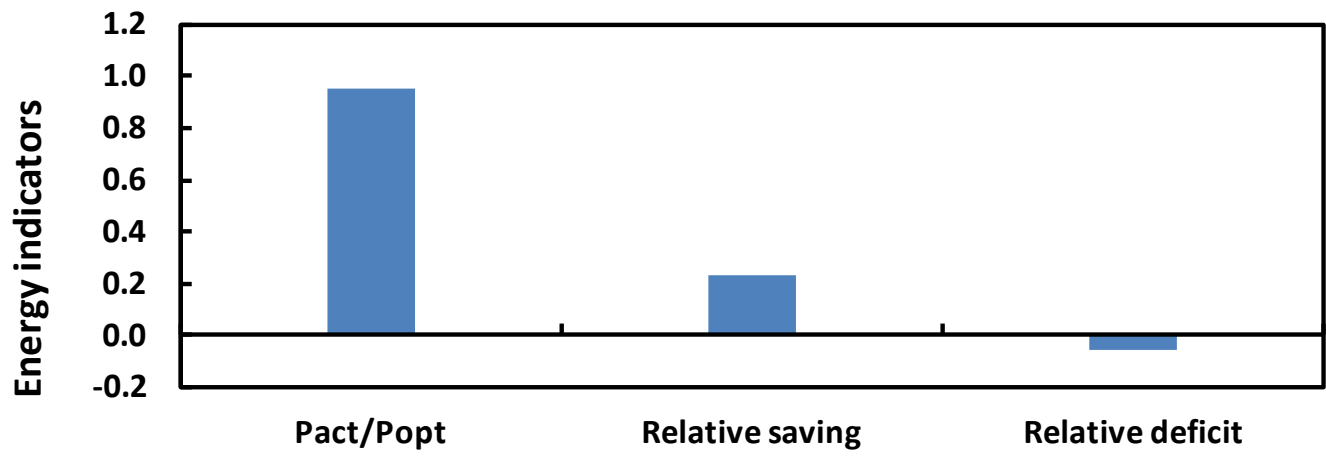


# Global performance analysis



Farm lot c06.3

# Global performance analysis







**ICID2015**

26<sup>th</sup>ERC & 66<sup>th</sup>IEC

**THANK YOU!**



**Luciano Mateos**

[luciano.mateos@ias.csic.es](mailto:luciano.mateos@ias.csic.es)

**Alexsandro C.S. Almeida**

**José A. Frizzone**

**Silvio C.R.V. Lima**