



**ICID2015**

26<sup>th</sup>ERC & 66<sup>th</sup>IEC

# DE L'ARCHIPEL OASIEN À L'ELDORADO PIONNIER

Gouvernance des nouveaux territoires irrigués



**Farida Amichi**  
farida.amichi@cirad.fr



- **« Groundwater economy »**

## **Eldorado :Success story ?**

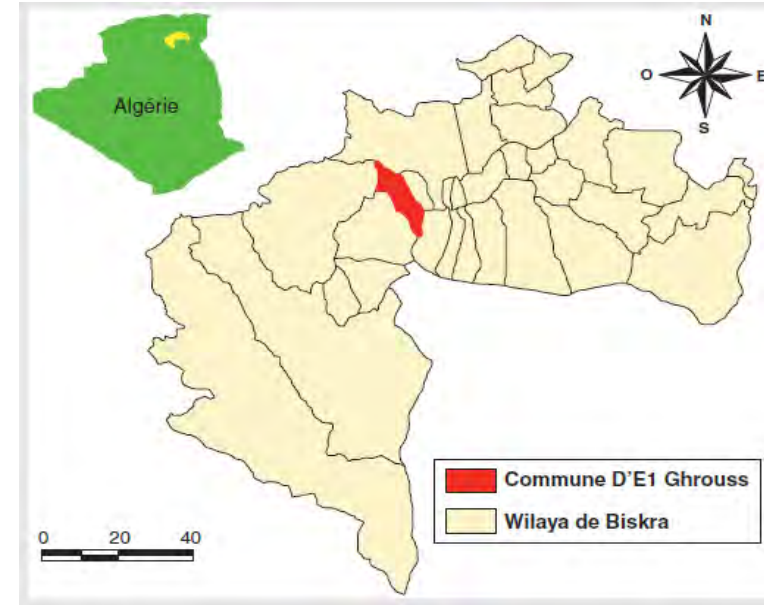
- territorial extension
- "Agricultural frontier" area rural / pristine areas
- Front pionnier: Des espaces en cours de territorialisation



**ICID2015**

26<sup>th</sup>ERC & 66<sup>th</sup>IEC

# El Ghrouss, a pioneer front



- Saharan context
- Arid climate
- Exclusive groundwater access
- Strong labor migration
- Palm trees
- Greenhouses
- Farm holdings in mutation from horticole crops to PD.

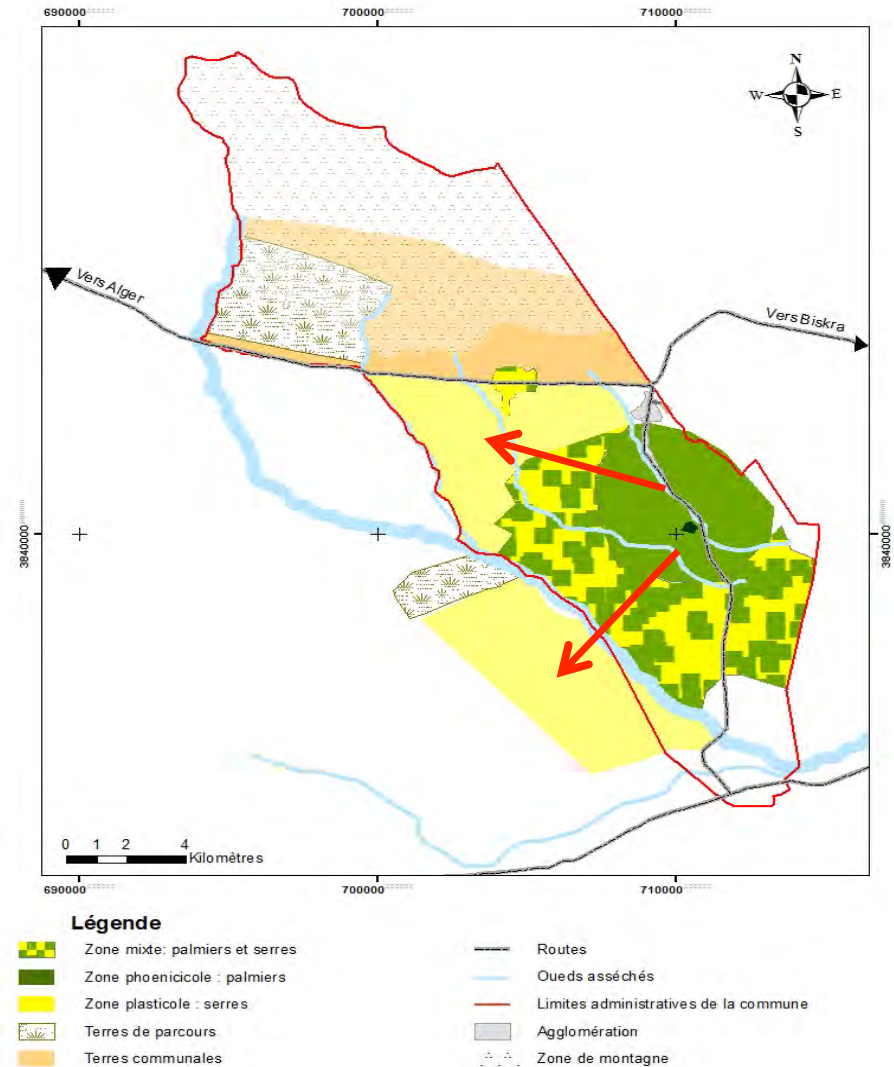


**ICID2015**

26<sup>th</sup>ERC & 66<sup>th</sup>IEC

# Current situation

- Colonization gradient
- Transitory culture
- Return to the patrimony (palm tree)
- Land quest (municipal, tribal, private, pastureland ?... Etc)





**ICID2015**

26<sup>th</sup>ERC & 66<sup>th</sup>IEC

# GW access



- Limitation of authorizations to drill  
200 tube-wells permitted at El Ghrouss (2011)  
1500 tube-wells identified at El Ghrouss (January, 2015)
- Land colonization (Doucen)
- Arrangement for the access
- Arrangement for the use
- Social network: neighborhood, drillers, local authority, ...etc.



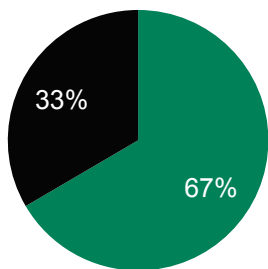
**ICID2015**

26<sup>th</sup>ERC & 66<sup>th</sup>IEC

# Water front

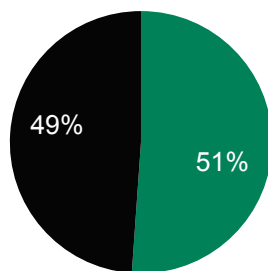
## Property

■ individuel ■ collectif

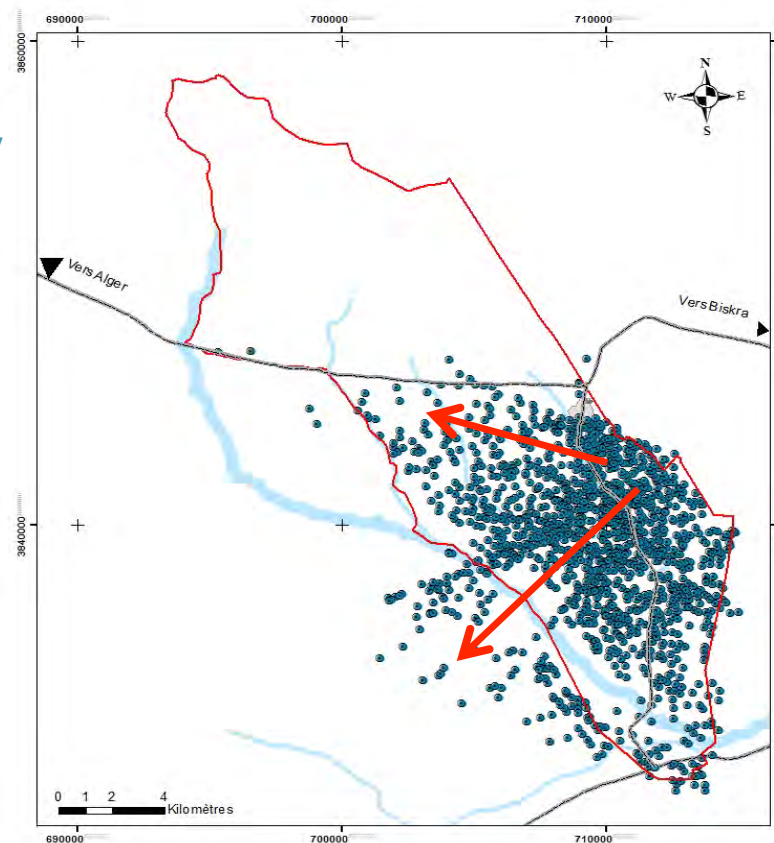
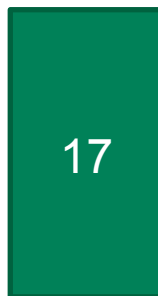


## Usage

■ individuel ■ collectif



## Density



### Légende

- Forage/Puits
- Routes
- Oueds asséchés
- Limites administratives de la commune
- Agglomération



**ICID2015**

26<sup>th</sup>ERC & 66<sup>th</sup>IEC

# Infrastructures



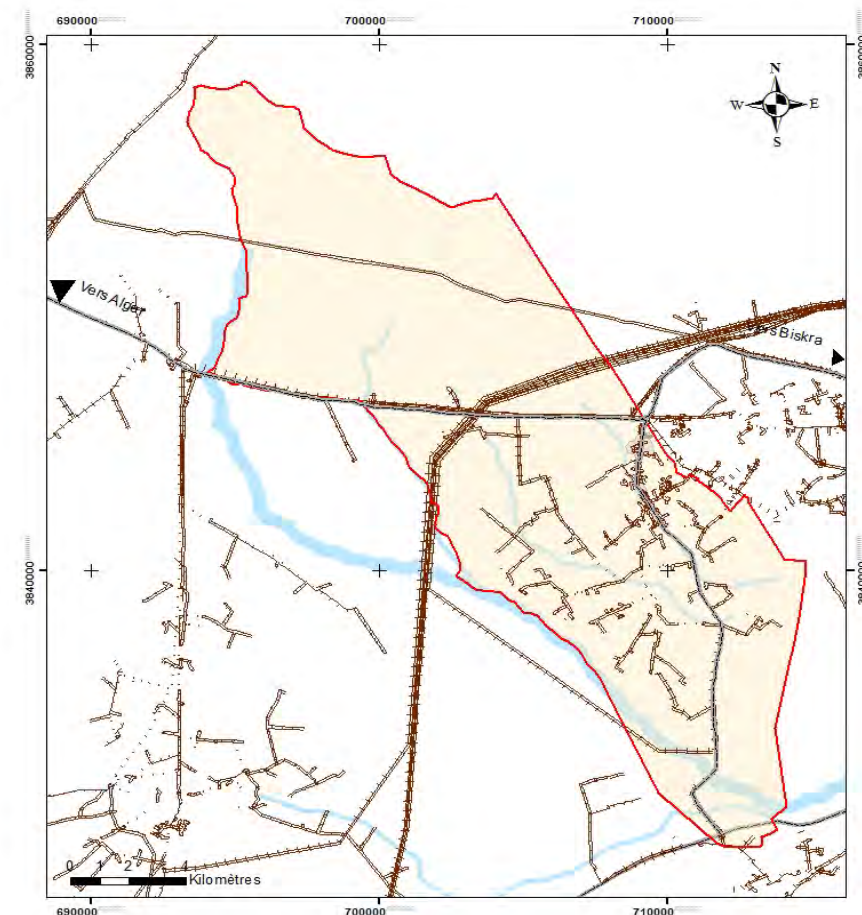
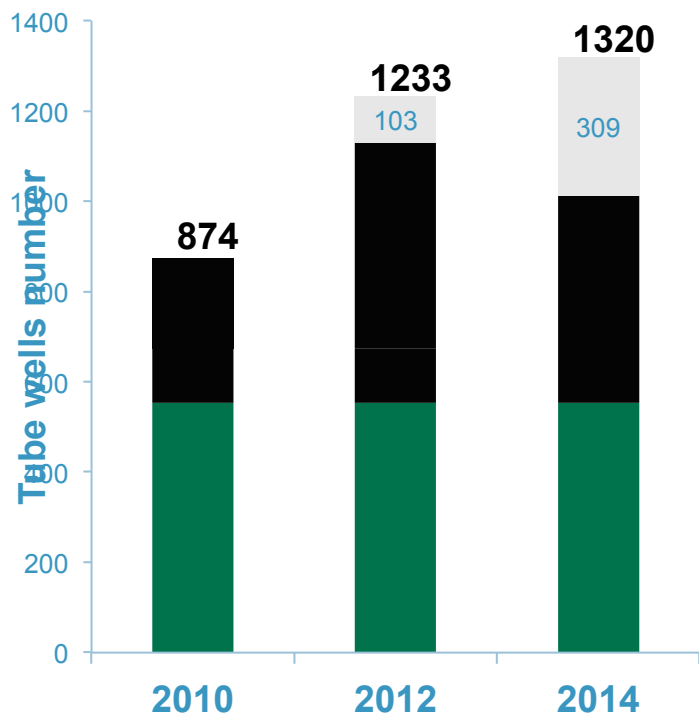


**ICID2015**

26<sup>th</sup>ERC & 66<sup>th</sup>IEC

# Infrastructures

1320 tube wells (Electrical network)

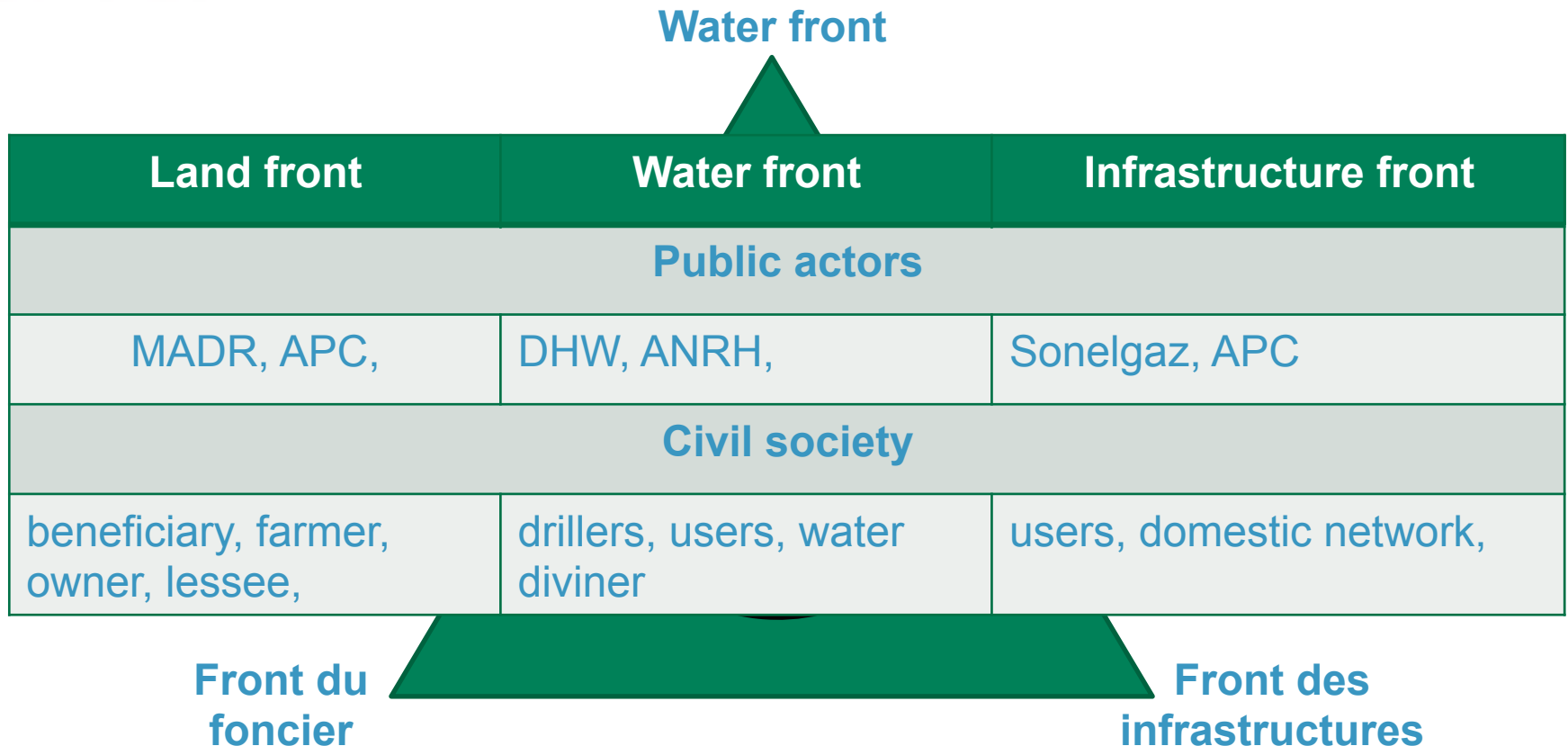


## Légende

- Réseau électrique
- Routes
- Oueds asséchés
- Limites administratives de la commune
- Agglomération



# 3 fronts for territorial conquest

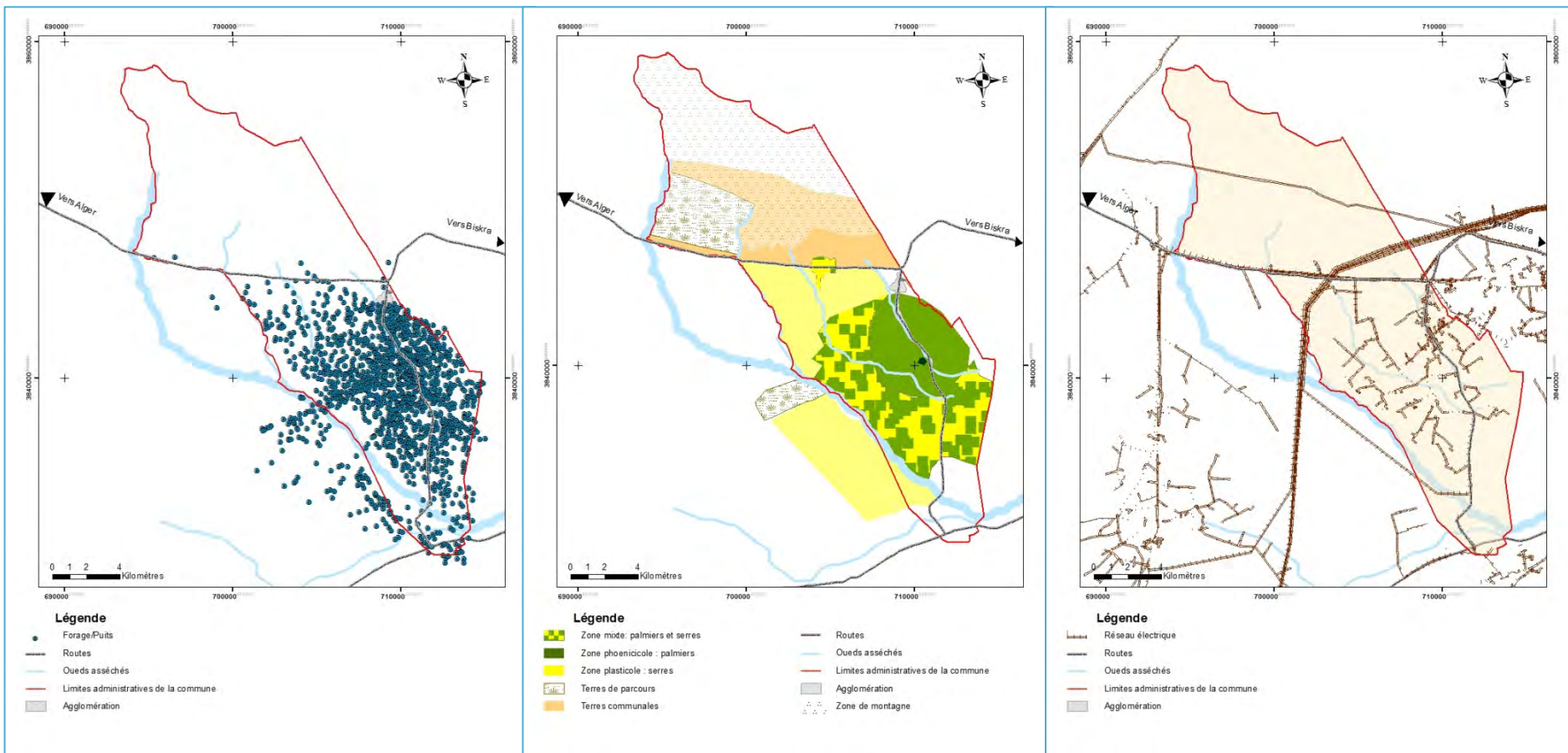




**ICID2015**

26<sup>th</sup>ERC & 66<sup>th</sup>IEC

# 3 fronts for territorial conquest

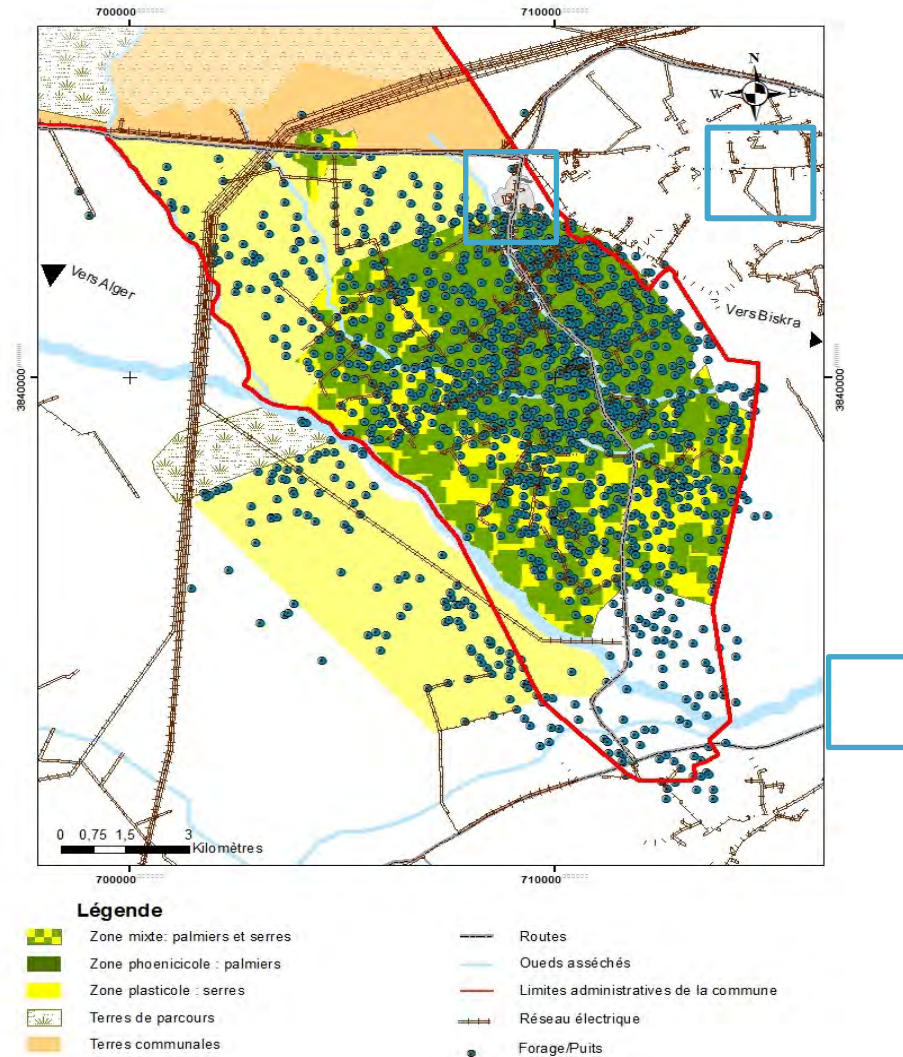




ICID2015

26<sup>th</sup>ERC & 66<sup>th</sup>IEC

# 3 fronts for territorial conquest



# Conclusion

---

pioneer areas are the result of close alliance of 3 fronts ; water , land and infrastructure

During the spatiotemporal quest for new territories, a front may precede the other. It can be promoted either by a state ambition, or through local initiatives.

Collective actions as the beginning of a governance mechanism;

one factor may slow down the agricultural development dynamic, to limit the socio-economic and environmental impact.



**ICID2015**

26<sup>th</sup>ERC & 66<sup>th</sup>IEC

**Thank  
you**