

# MAP-REUSE

*A web platform dedicated to all wastewater reuse projects across the world*



**Dimitry Serezat, N. Condom**  
Ecofilae, [nicolas.condom@ecofilae.fr](mailto:nicolas.condom@ecofilae.fr)



Partners :

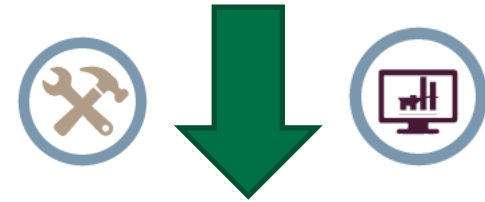




# Description of the case study

## Context

- Variety of scattered data
- Lack of promoting and upgrading projects
- Deficiency of experience feedbacks
- Poor communication in the Reuse community



Ecofilae has created a web platform to integrate all the wastewater reuse projects and data across the world.



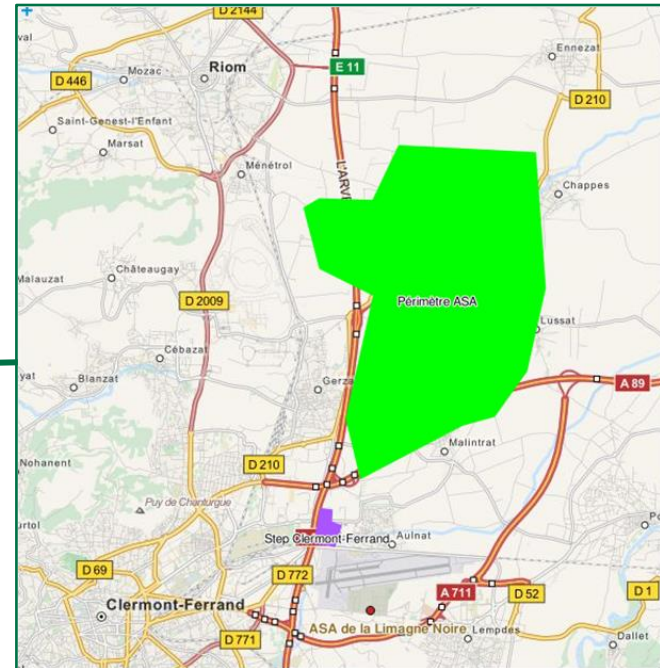
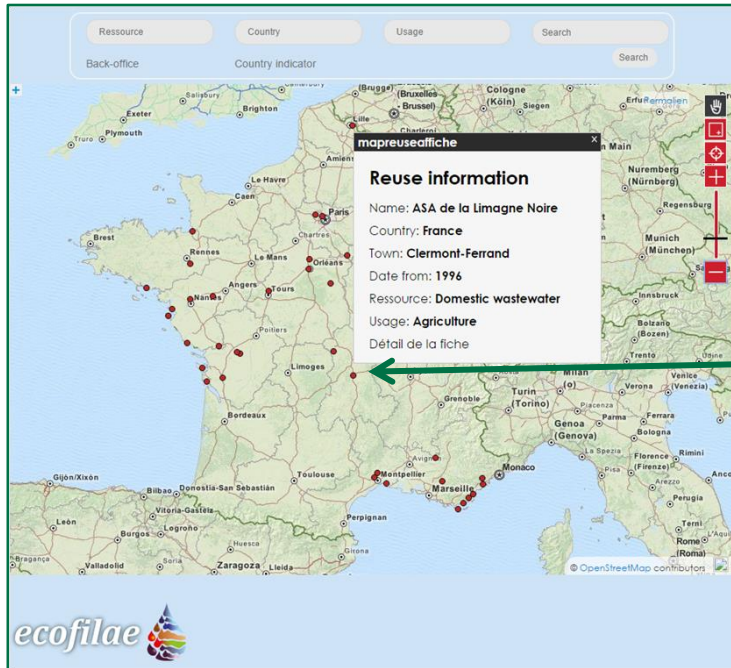




# Clermont-Ferrand - FRANCE

ICID2015  
26<sup>th</sup> ERC & 66<sup>th</sup> IEC

Project's name	Country	City	Start Date-End Date	Water Sources	Uses
ASA Limagne Noire	France	Clermont-Ferrand	1996 -	Domestic Wastewater	Agriculture



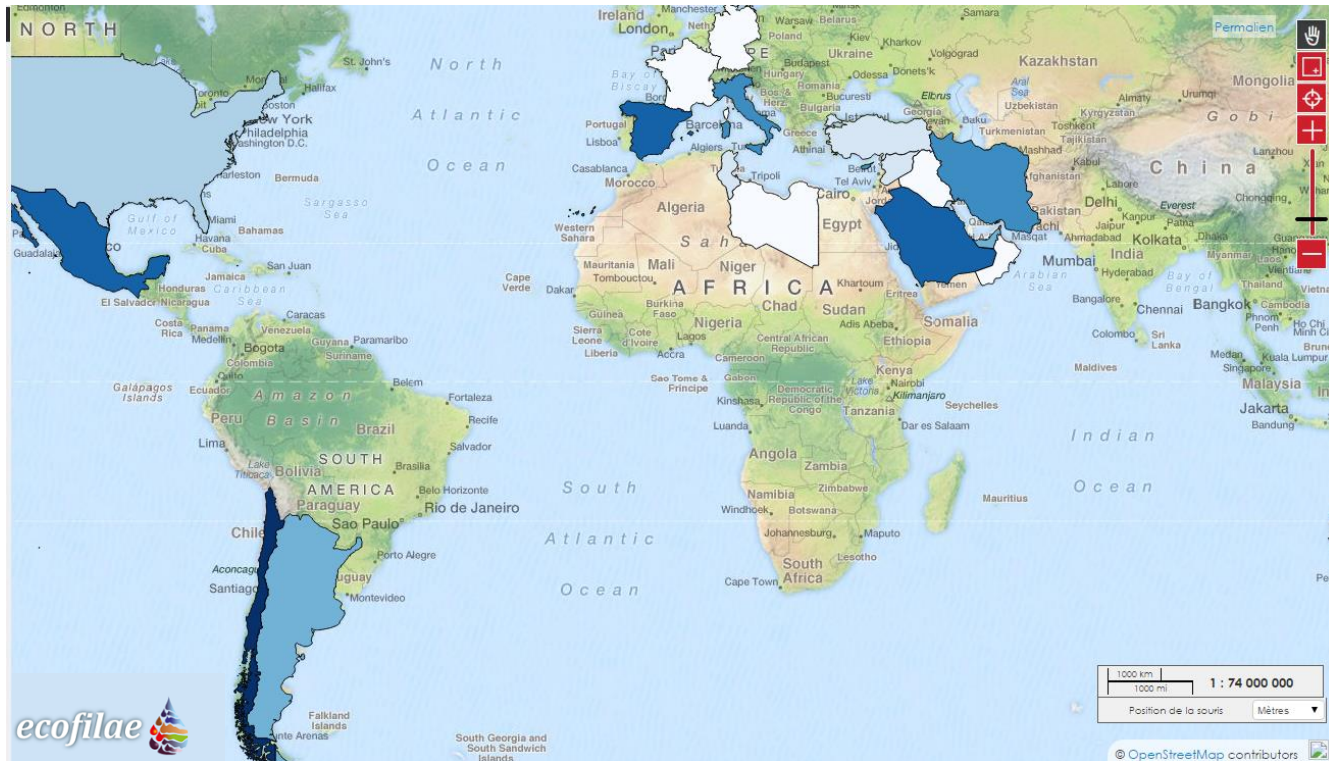
For each project, stakeholders will have access to different data as :

- Ressource used (domestic wastewater, industrial water...)
- Process and technologies for treatment and disinfection
- Storage capacity
- End uses (agriculture, urban, golf...)

# How do I illustrate the question: Which practices and technologies to create effective, safe and cost effective water reuse chain?

To go further : some country indicators as

- Irrigated surface (planned reuse)
- Irrigated surface (unplanned reuse)
- ...



# How do I illustrate the question: Managing the direct recovery of raw or poorly treated waste water : outrageous or righteous?

---



This map-reuse let stakeholders to :

- **Communicate**
- **share** data and provide integrated statistics on project or country scale
- have **experience feedbacks** (from past and current projects)
- **highlight projects**



Our aim is to create an **involved Reuse community**